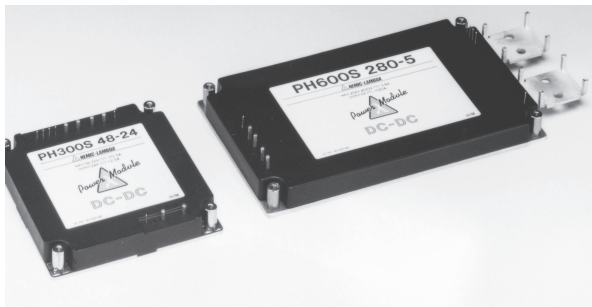


PH300-600 SERIES

DC/DC Single Output: 300-600 Watts



Features

- Wide input DC range: 48 and 280VDC input options
- Output power: 300W & 600W modules
- Output voltage trim
- Wide baseplate operating temperature -20°C~100°C
- Parallel and n+1 operation
- Fully isolated and regulated output
- International safety approvals and CE marked
- OVP, overload and overtemperature protection
- Fully encapsulated, suitable for harsh environments
- Suitable for a wide range of industrial applications

Specifications

INPUT VOLTAGE:	48VDC (36~76V) 280VDC (200~400V)
EFFICIENCY:	Model dependent 80%~88%
OUTPUT VOLTAGE:	Model dependent: 3.3V to 48VDC options
VOLTAGE TRIM:	12~28V models: ±20% 3.3V, 5V and 48V models: -10% to +20% Adjustment by TRIM terminal and external resistor network
OUTPUT POWER:	300~600 watts
LINE REGULATION:	0.4% or 20 mV, whichever is greater
LOAD REGULATION:	0.8% or 40mV, whichever is greater
TEMP. CO-EFFICIENT:	0.02% per °C
RIPPLE & NOISE:	100mV pk - pk: 2~5V models 150mV pk - pk: 12~15V models 240mV-280mV pk - pk: 24 - 28mV models
REMOTE SENSE:	Yes
OVER TEMP. PROTECTION:	Inverter shutdown protects against excessive temperatures. Recycle input power to restore operation
OVERLOAD PROTECTION:	Overload protection set at 105%~140% constant current with auto recovery
OVERVOLTAGE PROTECTION:	3V models set at 165%~240% 5~48V models set at 125%~145% Recycle input power to restore operation
REMOTE ON/OFF:	Short terminal CNT to SG to turn unit on, open circuit to turn unit off
INVERTER GOOD SIGNAL:	Provides an inverter good status at the IOG terminal when module is healthy
PARALLEL OPERATION:	Yes: output current balancing signal
SERIES OPERATION:	Yes
ISOLATION:	Input - output/ baseplate: 3000V/ 2500VAC (48VDC input models 1500V/1500VAC) Output - chassis: 500VDC
COOLING:	All modules must be "conduction" cooled via the baseplate
OPERATING TEMPERATURE:	Baseplate temperature -20°C to +100°C
SAFETY:	UL1950, CSA, EN60950
DIMENSIONS: (excluding terminals)	PH300S: 86 x 83 x 12.7mm PH600S: 146 x 86 x 12.7mm

MODEL	Input V	Output V	A	Power W
PH300S - 48 - 3.3	48V	3.3V	50A	150W
PH300S - 48 - 5	48V	5V	50A	250W
PH300S - 48 - 12	48V	12V	25A	300W
PH300S - 48 - 15	48V	15V	20A	300W
PH300S - 48 - 24	48V	24V	12.6A	300W
PH300S - 48 - 28	48V	28V	10.8A	300W
PH300S - 48 - 48	48V	48V	6.3A	300W
PH300S - 280 - 3.3	280V	3.3V	50A	165W
PH300S - 280 - 5	280V	5V	50A	250W
PH300S - 280 - 12	280V	12V	25A	300W
PH300S - 280 - 15	280V	15V	20A	300W
PH300S - 280 - 24	280V	24V	12.5A	300W
PH300S - 280 - 28	280V	28V	10.8A	300W
PH300S - 280 - 48	280V	48V	6.3A	300W
PH600S - 280 - 3.3	280V	3.3V	100A	330W
PH600S - 280 - 5	280V	5V	100A	500W
PH600S - 280 - 12	280V	12V	50A	600W
PH600S - 280 - 15	280V	15	40A	600W
PH600S - 280 - 24	280V	24V	25A	600W
PH600S - 280 - 28	280V	28V	21.5A	600W
PH600S - 280 - 48	280V	48V	12.5A	600W

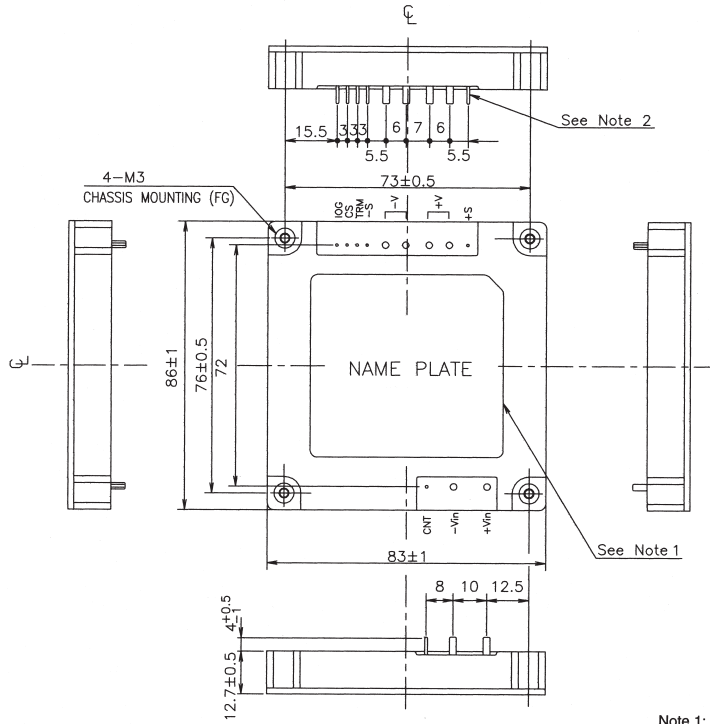
- **Manual & Full Application notes on PH300S/ 600S series, visit our website**



PH300 - 600 SERIES

DC/DC Single Output: 300 - 600 Watts

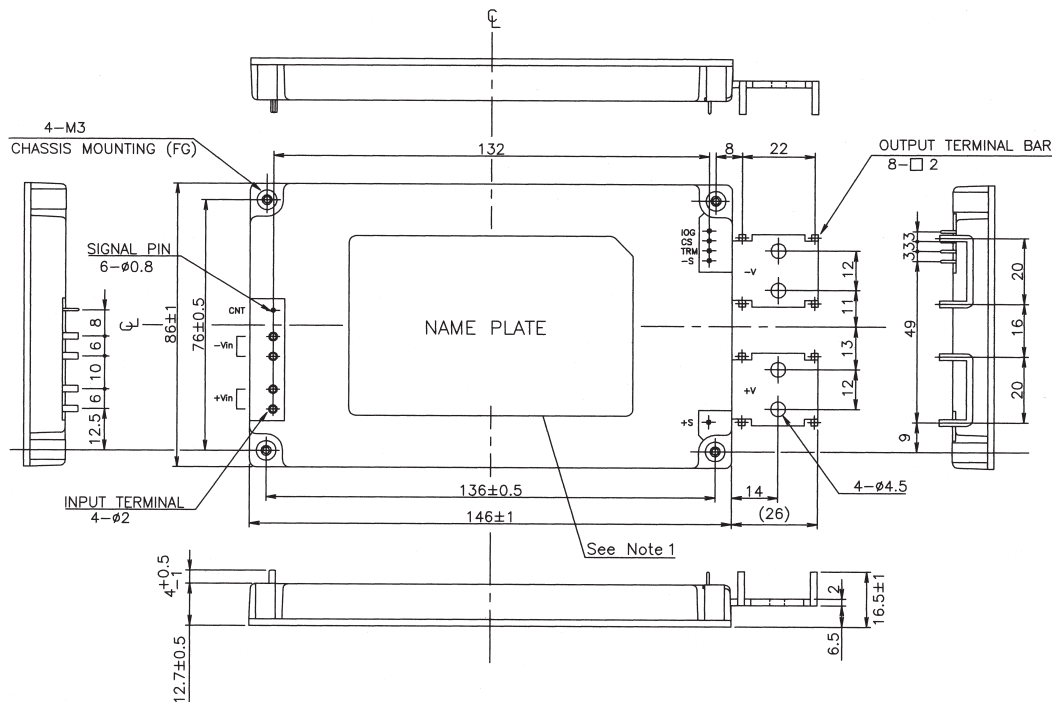
PH300S



(Unit: mm)

Note 1: *Model name, Input voltage range, Nominal output voltage, Maximum output current and country of manufacture are shown here in accordance
Note 2: Input & output terminal.....6- ϕ 2
6- ϕ 8

PH600S



(Unit: mm)

Note 1: *Model name, Input voltage range, Nominal output voltage, Maximum output current and country of manufacture are shown here in accordance